

Open Photoshop

Re-Open the file “Layer Exercise 2”

Save the file as “Layer Styles 1”

Click on the Dog layer

At the bottom of the Layers Palette, click on the “FX” button (also known as: Layer Styles).

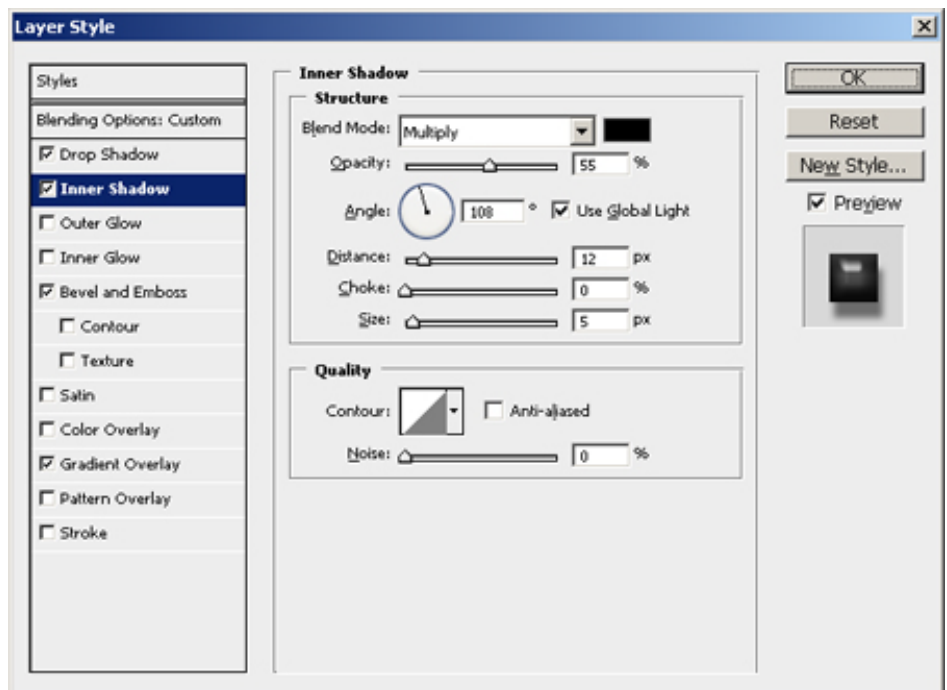
Select “Bevel and Emboss” style from the Pop-Up menu

Adjust the Structure Depth to 256%

Adjust the Structure Size to 18

Adjust the Shading Angle to 108

Adjust the Shading Altitude to 58



Click on the “Inner Shadow” style on the left hand side-bar

Adjust the Opacity to 55%

Adjust the Distance to 12

The Blend Mode should be “Multiply”

Click on “Drop Shadow” style on the left hand side-bar

Set the Opacity to 50%

Set the Distance to 10

Click on “Gradient Overlay” style on the left hand side-bar

Change the Gradient color mode to “Overlay”.

Holding down the “Ctrl” button down, click on the Dog layer and select “Copy Layer Style”

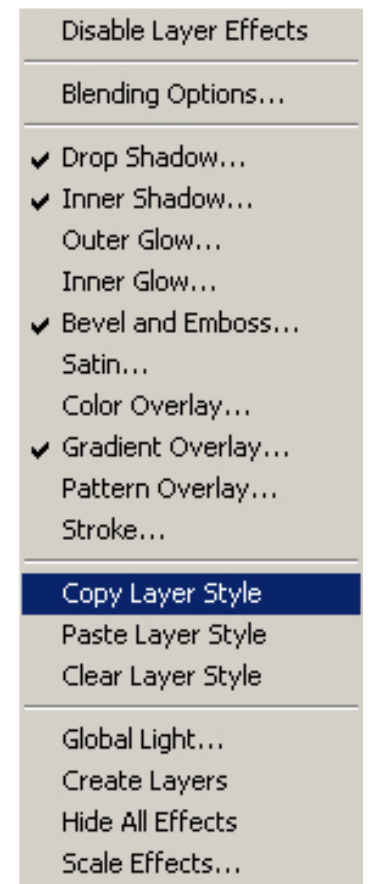
Holding down the “Ctrl” button down, click on the Cat layer and select “Paste Layer Style”

Repeat for the Bird Layer

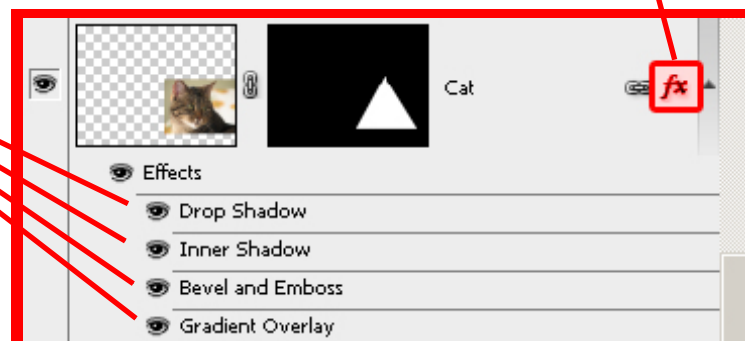
Double-click on the **FX** button on the Cat layer. This will re-open the Layer Styles dialog box.

Select “Outer Glow” from the left hand side-bar.

Set the Structure’s Blend Mode to “Normal”



**Enabled Effects**



Set the Structure's Opacity to 100%

Set the Element's Spread to 19%

Set the Element's Size to 18 px

Set the color to a nice pink

Click "Okay".

Click on the Dog layer

Double Click on the FX button on the layer

Select "Inner Glow" on the left-hand side-bar

Set the Blend Mode to "Normal"

Set the "Choke" at 24%

Set the Size to 38 px

Set the color to an Orange

Save

Add more Layer Style effects to the Bird layer as you wish.

Save

